

Design 6619 • Baby's Sweater

Size: to fit 1 month/3 months, 6/9 months and 12/18 months.

Directions for the smaller size are before the parentheses, with those for larger sizes inside. If there is only one figure, it applies to all sizes.

All measurements are in centimeters (cm). For approximate inch sizes simply multiply by 0.4 (or divide by 2.54).

Materials : yarn **Regia 4-faedig** , 100 g each #01090 admiral and #01087 lagoon, 50 g each #01992 ecr u, #00033 mottled flannel, #01980 mottled gray-blue, and an oddment in #01079 pumpkin.

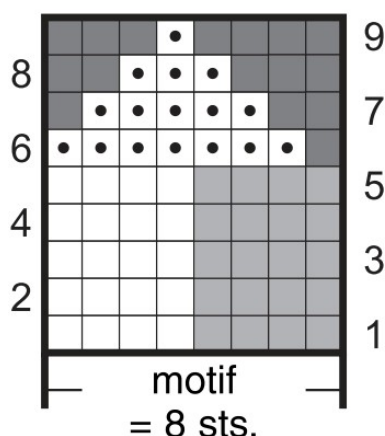
4-5 mm [size 6-8] needles, and one long 3-4 mm [size 3-6] circular needle of any length, **or size to obtain gauge**, 2(2/3) buttons (available from haberdasher y stores).

Work sweater with the double yarn throughout!

Stockinet stitch (st-st): K RS rows; P WS rows.

Jacquard pattern: work RS and WS rows in st-st in Jacquard technique foll chart; after edge st. rep motif of 8 sts throughout, edge st. Read RS rows from right to left, and WS rows from left to right. Work rounds 1-9 once.

Chart for Jacquard Pattern



Legend

□ = 1 st. ecr u

■ = 1 st. mottled flannel

◼ = 1 st. lagoon



Stripes: with admiral K 1 WS row, then in st-st 9 rows Jacquard patt, 2 rows mottled gray-blue, 1 row admiral, 2 rows mottled gray-blue, 1 row lagoon, 2 rows ecr u, 1 row lagoon, 4(6/10) rows mottled flannel, 1 row admiral, 10 rows mottled gray-blue, 1 row admiral 4(6/10) rows mottled flannel, 6(8/12) rows lagoon = 45(51/63) rows = 16(18.5/22.5) cm.

Gauge: 20 sts. and 28 rows st-st with the double yarn, each to 4 cm [20"] on 4-5 mm needles.

METHOD

Back: cast on 50(58/66) sts. with the double yarn admiral on 4-5 mm needles and work in stripe sequence. Then cont in st-st with admiral.

When work measures 21(25/29) cm (= 59 (71/81) rows) bind off 12(16/16) sts. at center for neck and finish each side sep. At neck edge bind off on every 2nd row 2 sts. once and 1 st. once.

When work measures 23(27/31) cm (= 65 (77/87) rows) bind off rem 16(18/22) sts. for right shoulder.

Work another 2 cm st-st over rem 16(18/22) sts. for left

shoulder for under lap, then bind off all sts.
Total height of work = 25(29/33) cm.

Front: proceed as for back except for neck.

When work measures 19(23/26) cm (= 53 (65/73) rows), bind off 8(12/12) sts. at center for neck and finish each side sep. At neck edge bind off on every 2nd row 2 sts. once and 1 st. 3 times. At the same time, 8(10/10) rows from start of neck shaping, make 1(1/2) buttonholes in right half as foll: for size 1 month/3 months work K2 tog over sts. 8-9 from edge st.; for size 6/9 months work K2 tog over sts. 9-10 from edge st., yarn-over, work rem sts. in patt; for size 12/18 months work edge st., then ♦ K6, K2 tog, yarn-over, rep once from ♦, work rem sts. in patt. P yarn-overs on foll row.

When work measures 23(27/31) cm (= 65 (77/87) rows) bind off rem 16(18/22) sts. on either side for shoulders.

Right sleeve: cast on 34(34/38) sts. with the double yarn admiral on 4-5 mm needles and work the 45(51/63) rows = 16(18.5/22.5) cm stripe sequence.

At the same time inc for sleeve shaping at each end 1 st. on 4th row from foundation edge once, then 1 st. on every 6th row 4 times and 1 st. on every 4th row 3 times (1 st. on every 4th row 11 times / 1 st. on 6th row once, then 1 st. on every 4th row 12 times) = 50(58/66) sts. At the end of stripes bind off all sts. loosely.

Work left sleeve alike but cast on with the double yarn pumpkin and work 1st WS row of stripes with pumpkin.

Finishing: embroider pieces with the double yarn as foll: into every 4th st. embroider French knots with ecr u onto the center of the 4(6/10) row lower panel in mottled flannel, and with admiral to the center of the upper 4(6/10) row high panel in mottled flannel.

Embroider the 10 row panel in mottled gray-blue foll stitch dia., rep motif throughout.

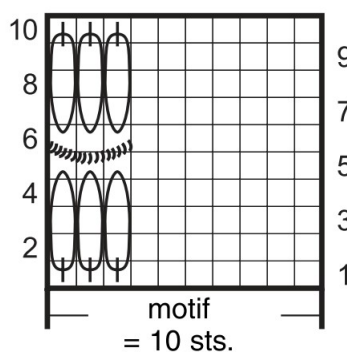
Embroider V- shaped straight sts. ecru each 2 sts. wide and 1 row high onto 3rd row of 6(8/12) row panel in lagoon.

Embroider 1 duplicate stitch in pumpkin onto every 2nd st. of 1st row admiral on front and back.

Block pieces to measurements, cover with a damp cloth and allow to dry. Close right shoulder seam. Bring under lap under left front shoulder panel. Sew sleeves in position, close sleeve and side seams.

For neck band pick up 49(59/59) sts. with the double yarn admiral along outer neck edge with the circular needle and on 1st WS row work edge st., then alt P1, K1, end with P1, edge st. On foll rows work sts. as they appear, and on 1st RS row work last buttonhole as foll: edge st. and K1, then yarn-over, K2 tog, work rem sts. in patt. K yarn-over on foll WS row. After 3 rows from picking up sts., K 1 more RS row with the double yarn pumpkin, then bind off all sts. pur wise. Sew on buttons.

Stitch Diagram for the 10 row panel in mottled gray-blue



Legend

- = 1 st. mottled gray blue
- = 1 lazy daisy stitch with the double yarn pumpkin
- ~~~~~ = 1 bullion stitch 3 sts. wide with the double yarn lagoon

