

## Design 6623 • Baby's Jacket

**Size:** to fit 3/6 months, 9/12 months and 18/24 months. Directions for the smaller size are before the parentheses, with those for larger sizes inside. If there is only one figure, it applies to all sizes.  
All measurements are in centimeters (cm). For approximate inch sizes simply multiply by 0.4 (or divide by 2.54).

**Materials:** yarn **Regia Silk**, 200(250/300) g #00050 mottled navy; yarn **Regia 4-faedig**, 50 g each #02002 cherry and #01092 fern, and oddment (about 50 g) #00600 white.

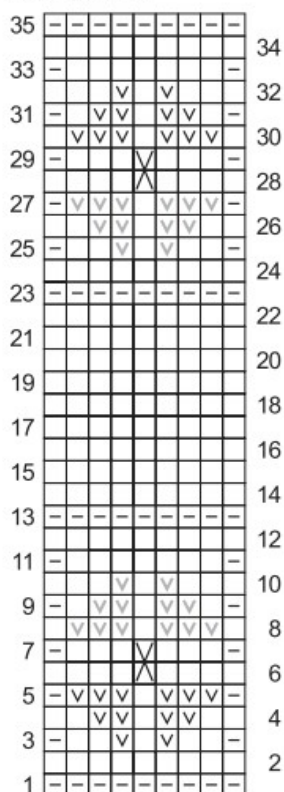
4-5 mm [size 6-8] needles and one 3.75-4.5 mm [size 5-6] circular needle of any length, **or size to obtain gauge**, plus one blunt embroidery needle, and 5 buttons (available from haberdashery stores).

**Work the jacket with the double yarn throughout!**

**Garter stitch:** K all rows.

**Stockinet stitch (st-st):** K RS rows; P WS rows; in rounds K all sts.

### Stitch Diagram and Chart for Flower Motifs, Back



**Legend**

- = mottled navy, K1 on RS rows; P1 on WS rows
- = mottled navy, P1 on RS rows; K1 on WS rows
- ◻ = 1 st. st-st mottled navy; duplicate stitch with 1 st. fern, 1 st. wide and 1 row high
- ◻ = 1 st. st-st mottled navy, duplicate stitch with 1 st. cherry, 1 st. wide and 1 row high
- X = 1 cross stitch white, 1 st. wide and 2 rows high



**Flower motif for back:** work in open rows over 9 sts. foll chart and embroider at the end. Sts. are given as they appear on RS of work. Read RS rows from right to left, and WS rows from left to right. 1st row = WS row. Work rows 1-35 once.

**Gauge:** 20 sts. and 30 rows st-st, and 20 sts. and 36 rows garter stitch, each to 10 cm [4"] with the double yarn on 4-5 mm needles.

### METHOD

**Back:** cast on 55(63/71) sts. with the double yarn mottled navy on 4-5 mm needles and work 6(7/7) cm (= 21(25/25) rows) garter stitch for welt; 1st row = WS row. Cont in st-st.

When work measures 8(9/13) cm (= 25 (27/39) rows) from welt start with the flower motifs over the 9 center sts. and work 35 rows = 11.5 cm high, then cont again in st-st over all sts.

At the same time, when work measures 11(12/14) cm (= 34(36/42) rows) from welt bind off for armholes at each end 6 sts. once = 43(51/59) sts.

When work measures 21.5(24.5/28.5) cm (= 66(74/86) rows) from welt, bind off 15(19/19) sts. at center for neck and finish each side sep. At neck edge bind off on every 2nd row 2 sts. once, then bind off rem 12(14/18) sts. on either side for shoulders.  
Total height of work = 29(33/37) cm.

**Left front:** cast on 33(37/41) sts. with the double yarn mottled navy on 4-5 mm needles and work 6(7/7) cm (= 21(25/25) rows) garter stitch; 1st row = WS row.

Cont in st-st over the first 27(31/35) sts., and work the last 6 sts. in garter stitch for buttonhole band; on 1st row work edge st. and 6(8/10) sts. in patt, then bind off 15 sts. for pocket mouth, work rem sts. in patt.

Leave all sts. on a holder and work pocket as foll: cast on 15 sts. with the double yarn cherry on 4-5 mm needles, work 5.5 (6.5/6.5) cm st-st, then insert these sts. for those bound off and cont over all sts. of left front in patt.

When work measures 11(12/14) cm (= 34 (36/42) rows) from welt bind off at right edge for armhole shaping 6 sts. once = 27 (31/35) sts.

When work measures 19(22/26) cm (= 58 (66/78) rows) from welt bind off at left edge for neck 8(10/10) sts. once, then on every 2nd row 3 sts. once, 2 sts. once and 1 st. twice.

When work measures 29(33/37) cm bind off rem 12(14/18) sts. for shoulder.

**Right front:** work in reverse, but with buttonholes and pocket, work pocket with the double yarn fern.

Work buttonholes at right edge as foll: on 5th(5th/1st) row from welt then on every 12th(14th/18th) row 4 times work edge st. and K1, then K2 tog, yarn-over. K yarn-over on foll WS row.

**Left sleeve:** cast on 30(34/38) sts. with the double yarn cherry on 4-5 mm needles. For cuff K 1 WS row cherry, then work 14 rows garter stitch with the double yarn mottled navy = 4 cm.  
Cont in st-st.

At the same time inc for sleeve shaping at each end 1 st. on every 6th row 2(1/0) times and 1 st. on every 4th row 8(11/14) times = 50(58/66) sts.

When work measures 13(15/17) cm (= 40 (46/52) rows) from welt bind off all sts.  
Total height of work = 17(19/21) cm.

Work **right sleeve** alike, but cast on with the double yarn fern and work 1st WS row with fern.

**Finishing:** embroider pieces with the single yarn as given. Embroider flower motifs onto back foll stitch dia. and chart. Embroider cross stitches over the center of every 2nd garter rib on front of pockets, in fern over left front, and in cherry over right front. Embroider cross stitches over every 2nd st. of 1st garter rib in mottled navy of sleeves, in fern over left sleeve, and in cherry over right sleeve. Block pieces to measurements, cover with a damp cloth and allow to dry. Join shoulder seams. Sew sleeves in position, close sleeve and side seams.

Pick up around outer neck edge with the circular needle sts. of right front, then 27(31/31) sts. fern to center back, 27(31/31) sts. cherry along rem neck edge each with the double yarn, then P 1 WS row and work 2 rows st-st for small roll edge; twist yarn on smooth st-st side of work when changing cols. Bind off all sts. and allow edge to roll up.  
Sew on buttons, see dia.

